

Rockwood Core Bond

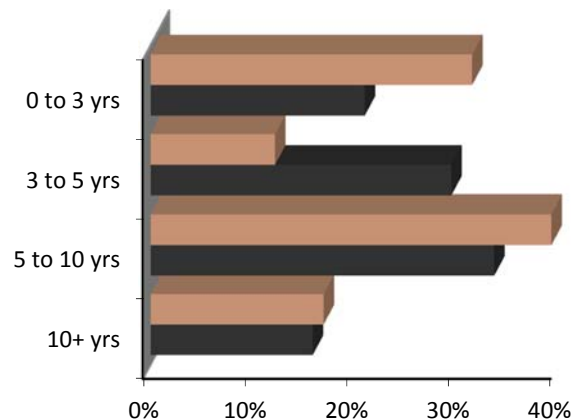
As of June 30, 2017

Optimal for clients seeking a core fixed income approach that maximizes the diversification benefits of high quality fixed income assets relative to equity investments. Portfolios are invested in highly liquid, investment grade securities, with an average credit quality rating of AA. Portfolio duration will generally be maintained in a range of +/-30% of the designated broad market benchmark.

Characteristics

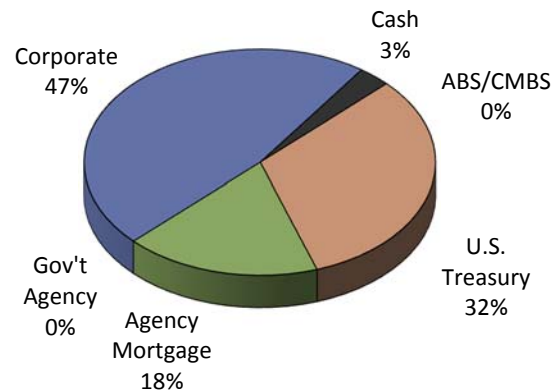
	Core Bond	Barclays Aggregate
Average Maturity	8.1 yrs	7.7 yrs
Effective Duration	5.9 yrs	5.8 yrs
Yield to Maturity	2.6%	2.4%

Effective Maturity



Core Bond Barclays Aggregate

Portfolio Composite



Barclays Aggregate

