

Rockwood Intermediate Bond

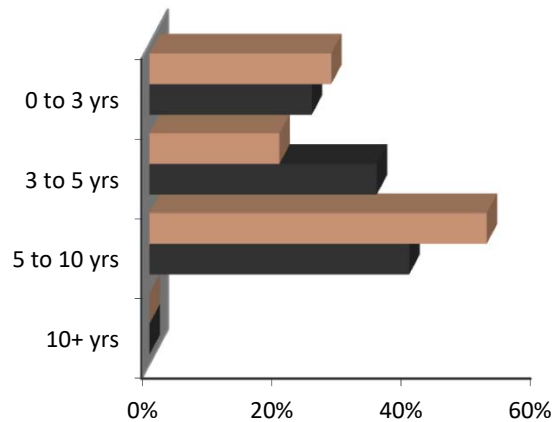
As of March 31, 2018

Appropriate for clients seeking a more conservative fixed income approach than a core bond product. Portfolios are invested in highly liquid, investment grade securities, with final expected maturities no greater than 10 years. Portfolio duration will generally be maintained in a range of +/-30% of the designated intermediate benchmark.

Characteristics

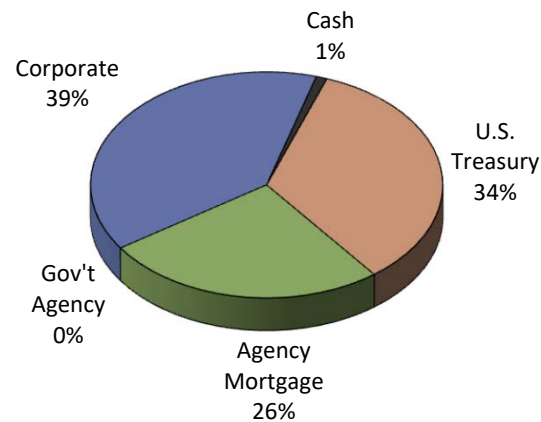
	Rockwood Int. Bond	Barclays Int. Agg.
Average Maturity	5.6 yrs	5.5 yrs
Effective Duration	4.4 yrs	4.4 yrs
Yield to Maturity	3.0%	3.0%

Effective Maturity



Rockwood Int. Bond Barclays Int. Agg.

Portfolio Composite



Barclays Int. Agg.

